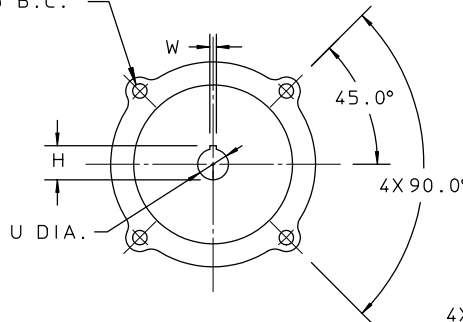
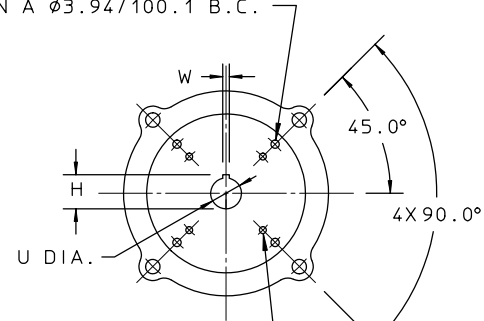


4X ϕ .41/10.4 THRU.
EQUALLY SPACED
ON A ϕ 5.88/149.3 B.C.



**56C-184C FR NEMA
MOTOR MOUNTING**

4X ϕ .25/6.3 THRU.
EQUALLY SPACED
ON A ϕ 3.94/100.1 B.C.



**63-80 FR METRIC
MOTOR MOUNTING**

MOTOR FRAME	U DIA. SHAFT	W KEY WIDTH	H KEY HEIGHT
56C	.626 15.9	.188 4.7	.71 18.0
140TC	.876 22.2	.188 4.7	.96 24.5
180C			
63	.434 11.0	.159 4.0	.51 12.9
80	.750 19.1	.237 6.0	.865 22.0

- NOTES:
- SUCTION AND DISCHARGE PORTS DEPENDENT UPON PUMP SHAFT ROTATION.
 - STANDARD MOTOR ADAPTOR FITS NEMA 56C, 143TC, 182C AND 184C FRAME MOTORS.
 - METRIC MOTOR ADAPTOR OPTION FITS 63 AND 80 FRAME MOTORS.
 - MUST USE FOOT MOUNTED C-FACE MOTOR OF SPECIFIED FRAME SIZES.

ALL DIMENSIONS ARE IN INCH/MM
Eclipse series **PULSAFEEDER**
 A Unit of IDEX Corporation

DIMENSIONAL DRAWING
ECLIPSE 2

DWN BY: JRY
DATE: 5/12/04
SD-2975-000

SECTION/PAGE: ECLIPSE 2 / 101
EFFECTIVE: 3/11/05
SUPERSEDES: NEW

REF: REVISION UPDATE DATE